

LINK UP and Discover More...

* **Navigate** your way around the 250 acre Park areas with maps and Trails from the Ranger Desk or on-line: www.birmingham.gov.uk/cannonhillpark

* **Cannon Hill Nature Diary** plus + Blog and Resources to help put your Local Patch on the Map. OPAL Open access and on-line study of nature all around you www.opalexplornature.org
Nature partners: Bham & Black Country Wildlife Trust, BrumBats, RSPB, Natural England, Woodland Trust, etc

* **Birmingham Nature Centre** – Pershore Road entrance to the Park. Free for children, small charge for adults. www.birmingham.gov.uk/naturecentre 0121-472 7775

* **Int'l Year of Astronomy and Space** Dark Sky night and Space Mission day events, plus Park Space resources www.birmingham-astronomy.co.uk

* **Arts around the Park** – with MAC closed until Autumn 2009, see diary for Park arts and cultural activities.

* **City Park and Local Heritage** – Making History events around the Park, Park Trails and world City links www.birminghamheritage.org.uk/cannonhill.html

Cannon Hill Peoples Park DIARY 2009

See also Rangers 'Out and About' Diary
(online or from Park)

14 Feb Astronomy and Space Discovery Day
2-10pm Bandstand and Main Arena

21-22 Feb Holders Ancient Woodland Days
11-4pm Ponds and Veteran Trees for Wildlife

3 May May 'Spring Over the Rea' Festival
11.4pm Local Spring Watch with OPAL

25 May Lord Mayors Show - Main Arena

**20 June Summer Solstice Picnic – Solar Watch
Astronomy and Space Discovery Station**
11 – 4pm Holders Sports Ground, off Moor Green Lane

25 Jul – 2 Aug Love Parks Week – Green Space

5 – 13 Sep Cannon Hill Open Heritage Festival
- with local community events

**12 Sep OPAL Autumn Festival, 'Discovering Places'
event for Cultural Olympiad** 11 – 4pm

**12 Dec Park Winter Festival, with Lanterns Fayre
and Dark Sky Park Discovery**
2 – 10pm



Cannon Hill Peoples Park 1873 – 2009

We love Cannon Hill Park

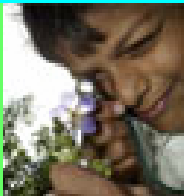
Great Discovery Events and Activities around the Park 2009



"We see other worlds and planets in our local park space, and I joined a Space Mission."

"I discover more about Nature and my local patch through the Park."

OPAL activities 2008-12



"The Park shows us what was great around the Midlands in 1809, and what we're still discovering from our science and heritage."

Boulton 2009 & Lunatic Discoveries



Cannon Hill Park Birmingham B13 2RD
by Edgbaston Cricket Ground. Bus 1, 35, 43
Tel: 0121-449 0238 Rangers: 0121-442 4226
'Out and About' Rangers Diary 2009

Park Friends : 0121-449 6024
Email: cannonhillfriend@aol.com

Astronomy & Space Discovery

IYA City Dwellers Guide to the Galaxy - Dark Sky, Solar Watch and Park Space Station Picnic
History of Telescopes - Park's Local Planet Trail
*Use a Quadrant to measure trees or position by the stars.
Space Cadet missions - just rocket science, with astronomy groups and visiting spacecraft.



Events Calendar - online or from the Tea Room and Information Boards in the Park incl:

- * May Spring Festival
- * Lord Mayors Show * Arts Fest
- * Park Heritage Open Week * Solar Picnic
- * BBC Breathing Place events all year

Sports and coaching

Health and fitness: 1km, 2km and 5km routes
Cycling and Sustrans cycle-way events.
Holders Sports Ground and Local Leagues
Links with Sports for All, and local training.

Green Gym volunteers ~ helping

with conservation and park natural areas: training and work with Rangers midweek and weekend sessions – ask at Info desk, or phone/email for more details.

Renewable & sustainable

Cannon Hill Park holds rich local resources for people and wildlife which are managed sustainably with your assistance. Please help conserve energy, river, meadow and woodland resources.



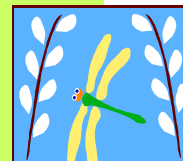
Botanical Park 1873 – 2009

Local Botanists discoveries. World Trees trail.

- New:
- * Sub-Tropical Park Experience
 - * Shelf Life – the part plants play in your food and the local economy
 - * Wildflowers river & hedgerow food

Friends and Families explore

Pass it On activity events and guides



Nature & Wildlife Spaces

Discover the natural world in your local patch. Living with nature around you day and night. Bugs, Bats and Beeboxes around home and local green spaces. Help measure local soil and air quality with worms and lichen.

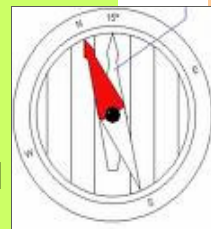
NEW: online Diary and Blog – contribute to your Local Nature Patch news! Help protect Veteran Trees for Wildlife. Find out about OPAL 2009 – 2012 open access nature labs in Year 1.

(see contacts page)

Themes and Navigation – *contact us*

if you can't find what you're looking for, or with any new discovery that you'd like to share.

D ISCOVERIES on Cannon Hill or in this leaflet are supported by Park Friends working with Rangers, City Environment & Culture, plus OPAL & other strategic partners.



Culture and Communities

Arts in the Park or walk in the Woods
Natural space for Play. Local Festivals -
* All Together Now - Cultural Olympiad.
* Park Village Green, the peoples venue – Celebrating Sanctuary & Creative Minds active in the Park

Youth matters and culture

Information and youth advisors
Arts and Make It Happenings
Park Ventures and Xchange
Diverse Digit-All Media

HERITAGE

- Fossil detectives find the city rocks
- Mills, waterway and landscape trails
- Tudor Brum and Victorian growth.
- * Welsh links & World Park connections
River Rea and Flood plain histories
- * Natural & Peoples History walks including Babbling Brooks, the 2008 Flood Trail, and 135 Years of City Events in the Peoples Park.

Outreach – Hands on Science:

- Park Discoveries Map and Passport as part of Boulton 2009, IYA and OPAL the park finds some discoveries still very much alive in science and business today in the Midlands, including:
Plant science & Photosynthesis, Space life, Solar, Wind and Hydrogen Energy transfer.
How Edgbaston and the West Midlands became famous for the Foxglove.